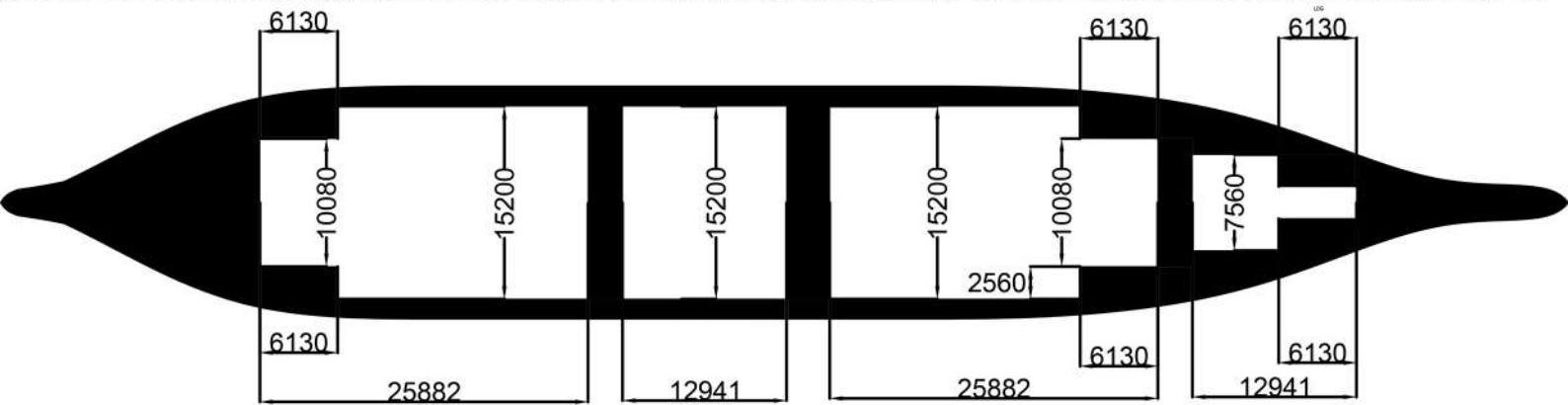
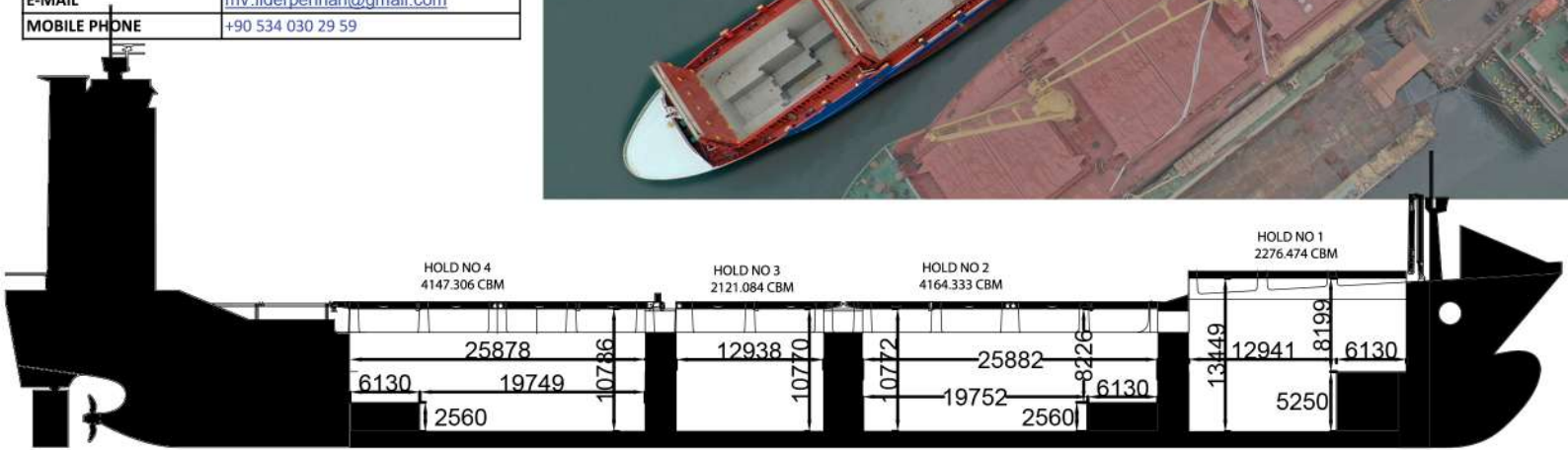


|                 |  |
|-----------------|--|
| SHIP'S OWNER    | LIDER GEMI SANAYI TURIZM NAKLIYAT VE TIC. LTD. STI.  |
| ADRESS          | CARSI MAH. DEREBOYU SOK. NO:18 MERKEZ TRABZON,TURKEY |
| MANAGER COMPANY | LIDER GEMI SANAYI TURIZM NAKLIYAT VE TIC. LTD. STI.  |
| COMPANY IMO NO: | 5956482  |
| PHONE           | +90 216 392 83 99                                    |
| FAX             | +90 216 392 83 98                                    |
| E-MAIL          | operation@lidersgemi.net                             |



|                             |                           |
|-----------------------------|---------------------------|
| <b>SHIP'S COMMUNICATION</b> |                           |
| MMSI NO.                    | 271047914                 |
| VSAT PHONE (24H)            |                           |
| INMARSAT-C/1                | 427102388 (LRIT)          |
| INMARSAT-C/2                | 427102389 (SSAS)          |
| E-MAIL                      | mv.liderperihan@gmail.com |
| MOBILE PHONE                | +90 534 030 29 59         |



|                  |   |
|------------------|---|
| SHIP'S NAME      | M/V LIDER PERIHAN                       |
| CALL SIGN        | TCAG012                                 |
| NATIONALITY      | TURKISH                                 |
| PORT OF REGISTRY | ISTANBUL                                |
| OFFICIAL NUMBER  | 2901                                    |
| IMO NO.          | 9499539                                 |
| P & I CLUB       | THE LONDON CLUB                         |
| CLASSIFICATION   | IACS RINA                               |
| TYPE OF SHIP     | CARGO, CONTAINER                        |
| CAPACITY         | 749 TEU                                 |
| BUILDER          | MADENCI GEMİ SANAYİ LTD. STI.           |
| DATE OF BUILD    | 3.11.2020                               |
| SERVICE SPEED    | 11 KNOT                                 |
| MAIN ENGINE      | HANSHIN / 2647 KW                       |
| GENERATORS       | A/E SCANIA 3 PCS<br>426 KW              |
| BOW THRUSTER     | STEP TYPE<br>WÖLFER ( 350 KW ) ELECTRIC |
| PROPELLER        | PITCH CONTROL                           |
| REEFER PLUGS     | 231                                     |

|                |           |
|----------------|-----------|
| <b>TONNAGE</b> |           |
| GROSS TONNAGE  | 7306      |
| NET TONNAGE    | 3663      |
| SUMMER DWT     | 10200     |
| TPC            | 22.47 MTS |

|                             |             |
|-----------------------------|-------------|
| <b>PRINCIPAL DIMENTIONS</b> |             |
| L.O.A.                      | 136.48 Mtrs |
| L.B.P.                      | 126.15 Mtrs |
| BREATH                      | 18.40 Mtrs  |
| DEPTH (MOULDED)             | 10.00 Mtrs  |
| DRAFT (DESIGNED)            | 7.85 Mtrs   |
| HIGHT (FROM KEEL)           | 39.00 Mtrs  |

|                                 |          |          |            |
|---------------------------------|----------|----------|------------|
| <b>DRAFT &amp; DISPLACEMENT</b> |          |          |            |
| LOAD LINES                      | DRAFT    | F. BOARD | DEADWEIGHT |
| TROPICAL FRESH                  | 8.373 mt | 1647 mm  | 10634,89   |
| TROPICAL                        | 8.212 mt | 1808 mm  | 10641,49   |
| FRESH WATER                     | 8.205 mt | 1815 mm  | 10264,36   |
| SUMMER                          | 8.044 mt | 1976 mm  | 10263,87   |
| WINTER                          | 7.876 mt | 2144 mm  | 9888,87    |

|   |                                   |
|---|-----------------------------------|
| <b>HOLD/ OPEN HATCH DIMENTIONS (metres)</b> |                                   |
| HOLD 1 (see packed plan)                    | HATCH L/W/H 19.07 X 12.60 X 13.38 |
| HOLD 2 (see packet plan)                    | HATCH L/W/H 25.88 X 15.12 X 10.68 |
| HOLD 3 (see packed plan)                    | HATCH L/W/H 12.94 X 15.12 X 10.68 |
| HOLD 4 (see packed plan)                    | HATCH L/W/H 25.88 X 15.12 X 10.68 |
| HOLD 4 (see packed plan)                    | HATCH L/W/H 25.88 X 15.12 X 10.68 |

|                        |             |
|------------------------|-------------|
| <b>TANK CAPACITIES</b> |             |
| HFO (USED FOR MGO)     | 455.425 cbm |
| MGO                    | 63.894 cbm  |
| LO                     | 34.569 cbm  |
| FW                     | 121.249 cbm |
| BALLAST CAP.           | 3985.72 cbm |
| SLUDGE CAP.            | 27.70 cbm   |
| BILGE HOLDING TANK     | 22.12 cbm   |
| SEAWAGE CAP.           | 44.82 cbm   |
| DIRTY OIL CAP          | 22.12 cbm   |
| BILGE SEP.SLUDGE TK.   | 10.21 cbm   |

| <b>HOLD CAPACITIES</b> |           |            |          |            |     |     |     |      |
|------------------------|-----------|------------|----------|------------|-----|-----|-----|------|
| HOLD                   | GRAIN CBM | GRAIN CBF  | BALE CBM | BALE CBF   | TEU | FEU | 45' | PLUG |
| HOLD 1 (BAŞALTINDA)    | 2286,306  | 80740,134  | 2286,306 | 80740,134  | 50  | 17  | N/A | 15   |
| HOLD 2                 | 4124,311  | 145648,668 | 4124,311 | 145648,668 | 94  | 46  | N/A | 36   |
| HOLD 3                 | 2101,167  | 74201,906  | 2101,167 | 74201,906  | 48  | 24  | N/A | 18   |
| HOLD 4                 | 4124,311  | 145648,668 | 4124,311 | 145648,668 | 94  | 46  | N/A | 36   |
| HATCH 1                | N/A       | N/A        | N/A      | N/A        | 57  | 21  | N/A | 27   |
| HATCH 2                | N/A       | N/A        | N/A      | N/A        | 126 | 63  | N/A | 21   |
| HATCH 3                | N/A       | N/A        | N/A      | N/A        | 70  | 35  | 30  | 21   |
| HATCH 4                | N/A       | N/A        | N/A      | N/A        | 140 | 70  | 30  | 39   |
| AFT (EVCİK)            | N/A       | N/A        | N/A      | N/A        | 70  | 35  | N/A | 18   |