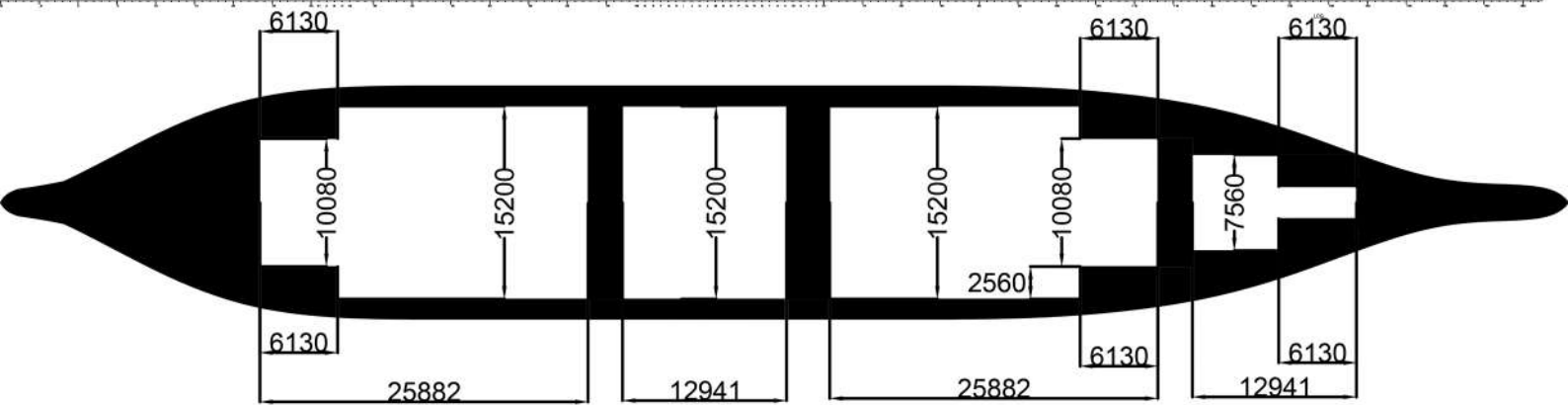
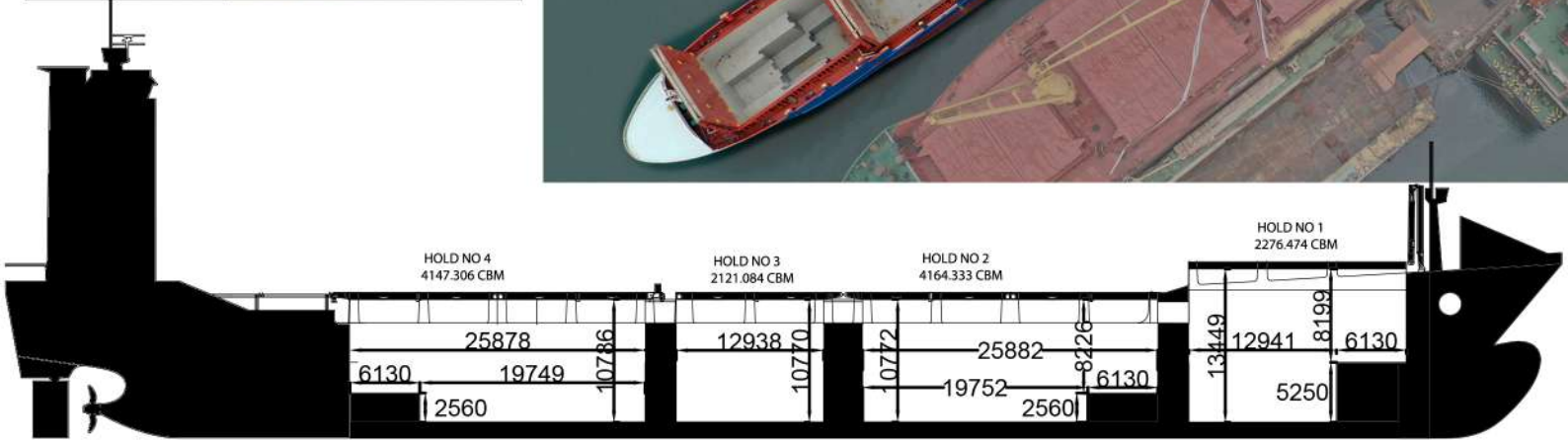


SHIP'S OWNER	LIDER GEMİ SANAYİ TURİZM NAKLIYAT VE TİC. LTD. STİ. - 5170723
CHARTERER	ORANGE SHIPPING CO. LTD. - 6199550
MANAGER COMPANY	LIDER SHIP MANAGEMENT CO LTD.
MANAGER COMPANY ADDRESS	ESENTEPE MAHALLESİ MİLANGAZ CADDESİ NO:46. UNLÜER SİTESİ F BLOK D/1 KARTAL 34870 İSTANBUL/TURKEY
COMPANY IMO NO:	5849340
PHONE	+90 216 392 83 99
FAX	+90 216 392 83 98
E-MAIL	Info@lidergemi.net

SHIP'S COMMUNICATION

MMSI NO.	356792000
VSAT PHONE (24H)	001 505 312 9985
INMARSAT-C/1	435679211 (LRIT)
INMARSAT-C/2	435679210 (SSAS)
E-MAIL	master@liderhall.lidergemi.commbox.com
MOBILE PHONE	+90 549 586 74 61



SHIP'S NAME	LIDER HALIL
CALL SIGN	3FNE6
NATIONALITY	PANAMA
PORT OF REGISTRY	PANAMA
OFFICIAL NUMBER	53381-PEXT-F
IMO NO.	9462275
P & I CLUB	THE LONDON CLUB
CLASSIFICATION	IACS RINA
TYPE OF SHIP	GENERAL CARGO,CONTAINER
CAPACITY	749 TEU
BUILDER	MADENÇİ GEMİ SANAYİ LTD. STİ.
DATE OF BUILD	JANUARY 2020
SERVICE SPEED	11 KNOT
MAIN ENGINE	MAK 3000 KW limited 2870 KW
GENERATORS	A/E SCANIA 3 PCS TYPE 0/13 074M - 400 KW EMG. MARGEN-MRG-MM-187 150 KW
BOW THRUSTER	STEP TYPE WÖLFER (500 KW) ELECTRIC
PROPELLER	PITCH CONTROL
REEFER PLUGS	234

TONNAGE			
GROSS TONNAGE	7306	LIGHTSHIP	4189,822
NET TONNAGE	3663	FWA	161 MM
SUMMER DWT	10236,87		
TPC	22.47 MTS		

PRINCIPAL DIMENSIONS	
L.O.A.	136.50 Mtrs
L.B.P.	126.15 Mtrs
BREATH	18.40 Mtrs
DEPTH (MOULDED)	10.00 Mtrs
DRAFT (DESIGNED)	7.85 Mtrs
HIGHT (FROM KEEL)	39.00 Mtrs

DRAFT & DISPLACEMENT			
LOAD LINES	DRAFT	F. BOARD	DEADWEIGHT
TROPICAL FRESH	8.373 mt	1647 mm	10634,89
TROPICAL	8.212 mt	1808 mm	10641,49
FRESH WATER	8.205 mt	1815 mm	10264,36
SUMMER	8.044 mt	1976 mm	10263,87
WINTER	7.876 mt	2144 mm	9888,87

HOLD/ OPEN HATCH DIMENTIONS (metres)	
HOLD 1 (see packed plan)	HATCH L/W/H 19.07 X 12.60 X 13.38
HOLD 2 (see packet plan)	HATCH L/W/H 25.88 X 15.12 X 10.68
HOLD 3 (see packed plan)	HATCH L/W/H 12.94 X 15.12 X 10.68
HOLD 4 (see packed plan)	HATCH L/W/H 25.88 X 15.12 X 10.68
HOLD 4 (see packed plan)	HATCH L/W/H 25.88 X 15.12 X 10.68

TANK CAPACITIES	
HFO (USED FOR MGO)	455.425 cbm
MGO	63.894 cbm
LO	34.569 cbm
FW	108.917 cbm
BALLAST CAP.	3985.720 cbm
SLUDGE CAP.	27.70 cbm
BILGE HOLDING TANK	22.12 cbm
SEAWAGE CAP.	44.82 cbm
DIRTY OIL CAP	22.12 cbm
BILGE SEP.SLUDGE TK.	10.21 cbm

HOLD CAPACITIES								
HOLD	GRAIN CBM	GRAIN CBF	BALE CBM	BALE CBF	TEU	FEU	45'	PLUG
HOLD 1	2286,306	80740,134	2286,306	80740,134	50	17	N/A	12
HOLD 2	4124,311	145648,668	4124,311	145648,668	94	46	N/A	48
HOLD 3	2101,167	74201,906	2101,167	74201,906	48	24	N/A	29
HOLD 4	4124,311	145648,668	4124,311	145648,668	94	46	N/A	46
HATCH 1	N/A	N/A	N/A	N/A	57	21	N/A	24
HATCH 2	N/A	N/A	N/A	N/A	126	63	N/A	24
HATCH 3	N/A	N/A	N/A	N/A	70	35	30	24
HATCH 4	N/A	N/A	N/A	N/A	140	70	30	25
AFT (EVÇİK)	N/A	N/A	N/A	N/A	60	30	N/A	25